

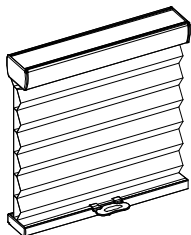
65101-10224-C

Read the instruction before operating your shade

Installation & Maintenance Instructions

Honeycomb Shades

Cordless



Getting Started

Remove shade from package. Save packaging until shade is installed and working to your satisfaction.

Tools:

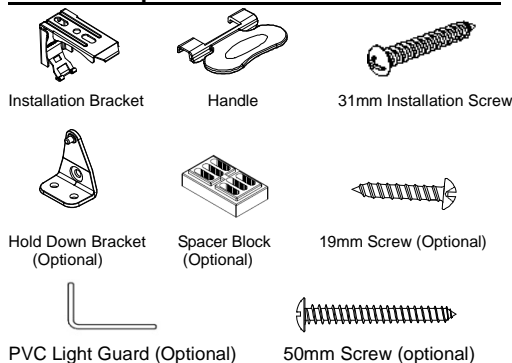
- Level
- Measuring Tape
- Pencil
- Power drill (6mm hex driver and drill bit)
- Screwdriver



You will need to use the following fasteners for your particular mounting surface.

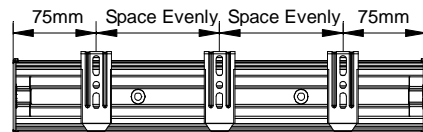
Surface	Fastener
Wood	Screws (Provide)
Drywall/Plaster	Wall Anchors, Expansion Bolts (Not Provide)
Metal	Sheet Metal Screws (Not Provide)

Check Component/Hardware:



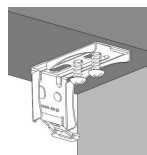
Step 1: Bracket Installation

- Measure 75mm from both ends of the head rail. Mark the bracket location on the mounting surface. Proper alignment of brackets will make installation easier.



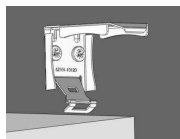
Inside Mount

- Align the front of brackets flush with the wall.
- Use two 31mm installation screws to secure brackets. Use wall anchors for drywall or plaster wall.



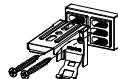
Outside Mount

- Align the end of brackets with the top window frame.
- Use two 31mm installation screws to secure brackets. Use wall anchors for drywall or plaster wall.



Note: If spacer block is required for outside mount, please follow the following guide:

Please always make sure the raised side of the spacer block is against the bracket.



If 2pcs spacer blocks are required, please follow the illustration to attach the spacer blocks.



Mount the combination of the bracket and spacer block with two 50mm spacer block screw.

The window frame protrudes from wall by 0-10mm, one spacer block is used.



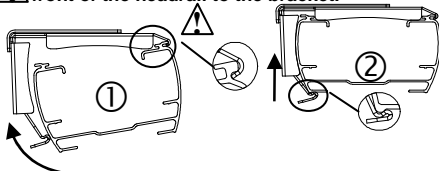
The window frame protrudes from wall 10-18mm, two spacer blocks are used.



Step 2: Shade Installation

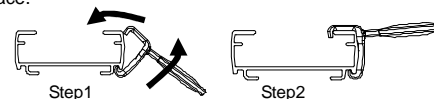
- Position head rail at an angle so that it is hooked to the front of the bracket. Then push it upward at the back to snap into the bracket.

For proper installation, start with attaching the front of the headrail to the bracket.



Step 3: Handle Installation

Position the handle at an angle so that it is hooked to the bottom of the bottom rail. Then push it upward to snap into place.

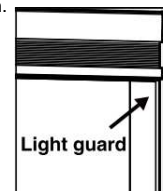


Step 4: Install Light Guard (Optional for IB)

a. The light guard is to be placed at back of the shade at left & right side.

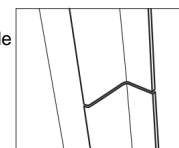
Place the light guard vertically towards the bottom window frame. To avoid scraping, leave a 2mm gap between fabric stack and light guard. And then mark out the location with a pencil.

Remove the double sided tapes and carefully paste the light guard in position.



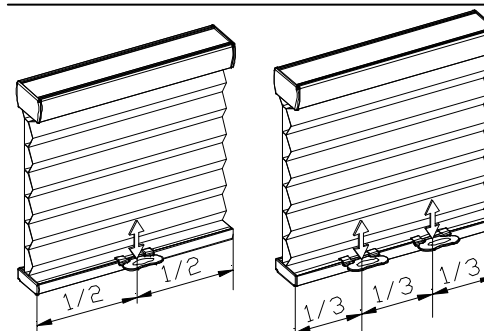
Note: The light guard on both sides are identical;

Use the double-sided tape on the narrow side of the light guard to attach to the window frame.



b. When light guard length > shade width and ≥ 2000 mm, light guard will be sliced into 2 parts evenly.

Step 5: Shade Operation



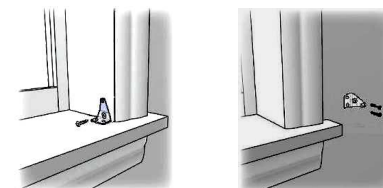
To lower the shade, gently pull down the shade on the bottom rail handle and stop at the desired location.

To raise the shade, gently raise the shade on the bottom rail handle to desired height.

Do not grasp the rail unevenly. Always lower or raise the shade in the middle or use both hands with even pressure to two handles of the rail.

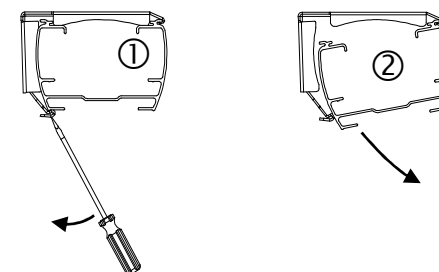
Step 6: How to Install Hold Down Brackets (optional)

- Use 19mm hold down bracket screw to secure each bracket.



Remove the Shade

Fully raise the shade, and then gently pry the bracket off the head rail with a flat screwdriver. Remove the shade.



Cleaning the Shade

Routine cleaning will help maintain the beauty of your shade. The shade can be cleaned by using a soft brush, vacuumed with a low suction hand-held vacuum, cleaned ultrasonically (specify that a mild solution must be used and that the head rail should never be immersed in liquid), or dampen a clean cloth with a warm water and mild detergent solution to dab the spot until it's gone (do not rub!).

Troubleshooting

Problem	Solution
The shade will not snap into the mounting brackets	Check if mounting brackets are aligned. Refer to Step 1.
The shade will not lift	Gently pull down on the bottom rail to reactivate the cordless mechanism. Repeat if necessary.
The shade stack up unevenly	Lower the shade completely, then raise it up to correct it. Repeat if necessary.