

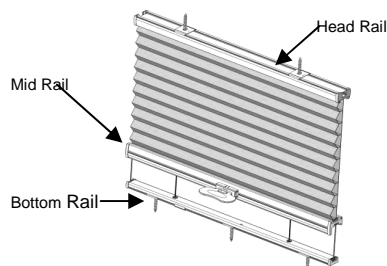
# 65101-10229-B

## Read the instruction before operating your shade

### Installation & Maintenance Instructions

#### Honeycomb Shade

#### SmartFit™ for Sloped Window



### Getting Started

Remove the shade from the package. Save the packaging until the shade is installed and working to your satisfaction.

#### Recommended Tools

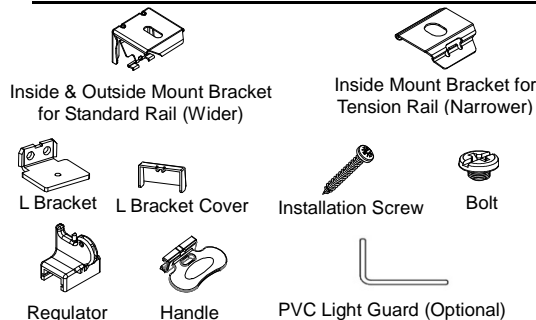
- Power drill and drill bit
- Measuring tape
- Screwdriver
- Level
- Pencil
- Regulator (Provided)



You will need to use the following fasteners for your particular mounting surfaces:

Surface	Fastener
Wood	M3.5x25mm Screws (Provided)
Drywall/Plaster	Wall Anchors, Expansion Bolts (Not Provided)
Metal	Sheet Metal Screws (Not Provided)

### Check Hardware

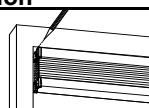


### Step1: Prepare the Shade for Installation

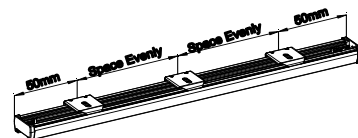
Carefully unwind the cord and steel wire in the opposite tied direction. Remove the cardboard and PE bag. Refer to model diagrams for proper installation.

### Step2: Bracket Installation

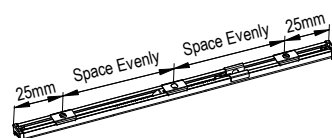
Place the shade in the desired position and mark the ends of the shade.



Mount the brackets at their respective distance from the end of the rail. All brackets must be aligned and evenly spaced when more than two brackets are required.



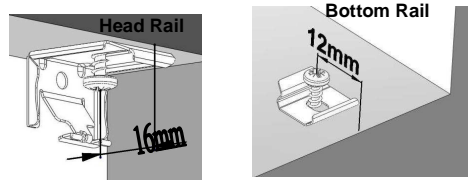
Brackets Distribution of Head Rail



Brackets Distribution of Bottom Rail

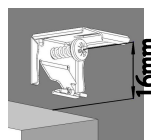
### Inside Mount

The distance between bracket screw hole and the edge of the window frame should be at least 16mm for head rail, and 12mm for bottom rail. Mount the brackets with M3.5x25mm screw do not over tighten the bracket of the Bottom Rail.

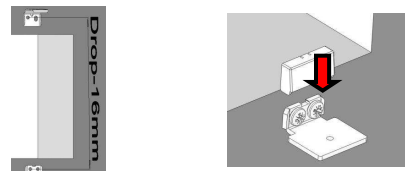


### Outside Mount

**For Head rail:** The min. distance between bracket screw hole and the edge of the window frame is 16mm. Mount brackets with 1pc M3.5x25mm installation screw and align them horizontally.



**For Bottom rail:** Mark the position for L bracket. The distance between L bracket and the head rail bracket screw hole is shade drop minus 16mm. Mount L bracket with 2pcs M3.5x25mm installation screw. Attach the L bracket cover.



Mount the bottom rail bracket onto the L bracket with 1pc bolt.



Recommendation: avoid gypsum board surface.

### Step 3: Install Light Guard (Optional for IB)

#### Please install the light guard before installing the shade.

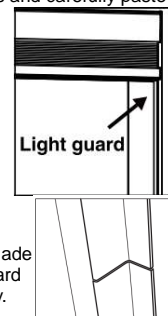
a. The light guard is to be placed at back of the shade at left & right side.

Place the light guard vertically towards the bottom window frame. To avoid scraping, leave a 2mm gap between fabric stack and light guard. And then mark out the location with a pencil.

Remove the double sided tapes and carefully paste the light guard in position.

Note: The light guard on both sides are identical;

Use the double-sided tape on the narrow side of the light guard to attach to the window frame.

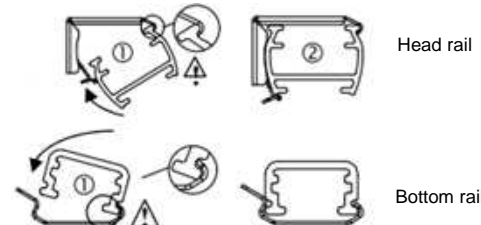


b. When light guard length > shade width and  $\geq 2000$ mm, light guard will be sliced into 2 parts evenly.

### Step4: Install the Shade

- Position the shade so that the front is facing you.
- Insert the rail with an angle facing the window; hook from the bracket front and push upward to snap it in.

⚠ For proper installation, start with attaching the head rail to the bracket



### Step5: Handle Installation

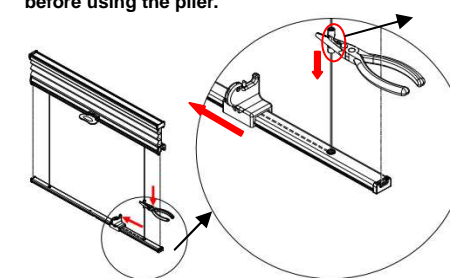
Slide the handle onto the plastic piece that is pre-attached to the mid rail.



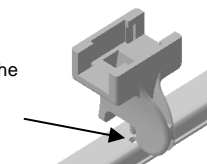
### Step6: Adjust the Steel Wire

After the installation, use a plier to pull down the steel wire, and simultaneously slide the regulator towards the direction as shown below.

**Note: Please use cloth or similar to protect the steel wire before using the plier.**



To loosen the steel wire, place the regulator pin on the bottom rail hole and press down.

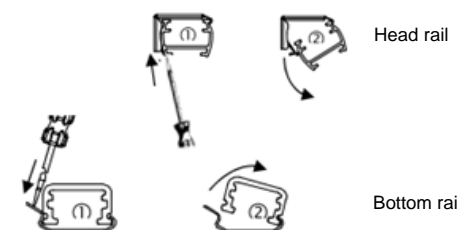


### Step7: Adjust the Shade

After the shade is completely installed, use the handle to operate the shade to the top/bottom and adjust the shade to level. Then you may operate the shade to any desired position.

### Step8: Remove the Shade

Fully raise/lower the shade. Insert screwdriver into the gap between the back of the rail and the bracket. Gently maneuver the screwdriver toward yourself to pry the bracket.



### Cleaning Instructions

Routine cleaning will help maintain the beauty of your shade. The shade can be cleaned by using a soft brush, vacuumed with a low suction hand-held vacuum, cleaned ultrasonically (specify that a mild solution must be used and that the head rail should never be immersed in liquid), or dampen a clean cloth with a warm water and mild detergent solution to dab the spot until it's gone (do not rub!).