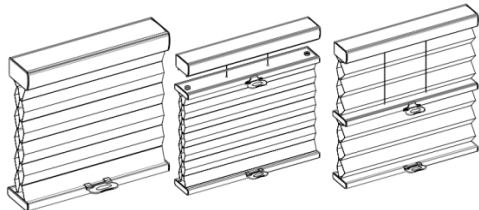


65101-10247-A

Read the instruction before operating your shade

Installation & Maintenance Instructions Honeycomb Shades 62mm S & 62mm D Cordless, Cordless TDBU Cordless Day and Night



Getting Started

Remove shade from package. Save packaging until shade is installed and working to your satisfaction.

Tools:

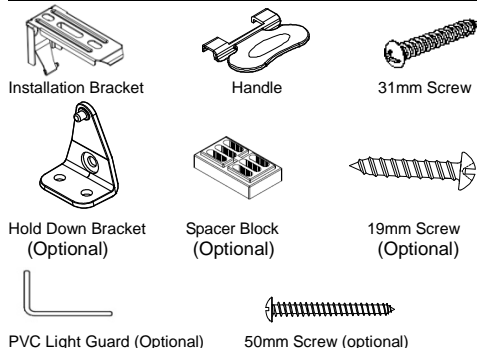
- Level
- Measuring Tape
- Pencil
- Power drill (6mm hex driver and drill bit)
- Screwdriver



You will need to use the following fasteners for your particular mounting surface.

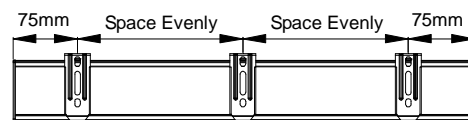
| Surface | Fastener |
|-----------------|---|
| Wood | Screws (Provide) |
| Drywall/Plaster | Wall Anchors, Expansion Bolts (Not Provide) |
| Metal | Sheet Metal Screws (Not Provide) |

Check Component/Hardware:



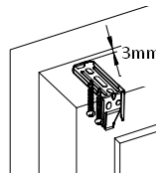
Step 1: Bracket Installation

- Measure 75mm from both ends of the head rail. Mark the bracket location on the mounting surface. Proper alignment of brackets will make installation easier.



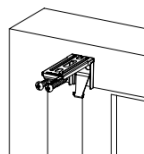
Inside Mount

- Allocate a minimum distance of 3mm from wall to the front of brackets.
- Use two 31mm screws to secure brackets. Use wall anchors for drywall or plaster wall.



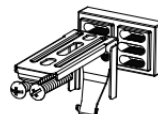
Outside Mount

- Align the end of brackets with the top window frame.
- Use two 31mm screws to secure brackets. Use wall anchors for drywall or plaster wall.

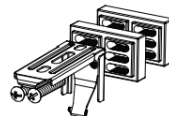


Note: If spacer block is required for outside mount, please follow the following guide:

Please always make sure the raised side of the spacer block is against the bracket.



If 2pcs spacer blocks are required, please follow the illustration to attach the spacer blocks.



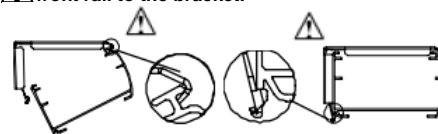
Mount the combination of the bracket and spacer block with two 50mm screw.

| | |
|---|--|
| The window frame protrudes from wall by 0~10mm, one spacer block is used. | |
| The window frame protrudes from wall 10~18mm, two spacer blocks are used. | |

Step 2: Shade Installation

- Position head rail at an angle so that it is hooked to the front of the bracket. Then push it upward to snap into the bracket.

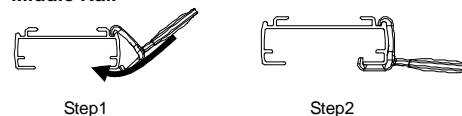
⚠ For proper installation, start with attaching the front rail to the bracket.



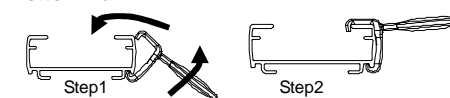
Step 3: How to Install Shade Handle

Position the handle at an angle as shown below so that it is hooked to the rail. Then push it to snap into place.

Middle Rail



Bottom Rail



Step 4: Install Light Guard (Optional for IB)

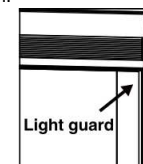
a. The light guard is to be placed at back of the shade at left & right side.

Place the light guard vertically towards the bottom window frame. To avoid scraping, leave a 2mm gap between fabric stack and light guard. And then mark out the location with a pencil.

Remove the double sided tapes and carefully paste the light guard in position.

Note: The light guard on both sides are identical;

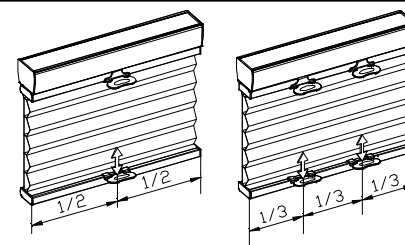
Use the double-sided tape on the narrow side of the light guard to attach to the window frame.



b. When light guard length > shade width and ≥ 2000 mm, light guard will be sliced into 2 parts evenly.



Step 5: Shade Operation



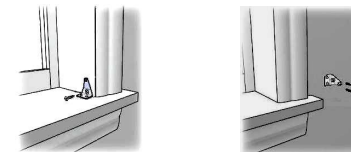
To lower the shade, gently pull down the shade on the bottom rail handle and stop at the desired location. For TDBU & Day & Night, pull down the bottom rail first before lowering the middle rail.

To raise the shade, Gently raise the shade on the bottom rail handle to desired position. For TDBU & Day & Night, Pull the midrail down fully to the bottom first and then raise the bottom rail together with midrail up.

⚠ Do not grasp the rail unevenly. Always lower or raise the shade in the middle or use both hands with even pressure to two handles of the rail.

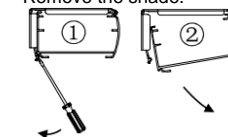
Step6 : How to Install Hold Down Brackets (optional)

- Use 19mm screw to secure each bracket.



Remove the Shade

- For Cordless TDBU, Lower the mid rail
- For Cordless and Cordless Day & Night, Fully raise the shade
- Then gently pry the bracket off the head rail with a flat screwdriver as below picture. Remove the shade.



Cleaning the Shade

Routine cleaning will help maintain the beauty of your shade. The shade can be cleaned by using a soft brush, vacuumed with a low suction hand-held vacuum, cleaned ultrasonically (specify that a mild solution must be used and that the head rail should never be immersed in liquid), or dampen a clean cloth with a warm water and mild detergent solution to dab the spot until it's gone (do not rub!).

Troubleshooting

| Problem | Solution |
|--|--|
| The shade will not snap into the mounting brackets | Check if mounting brackets are aligned. Refer to Step 1. |
| The shade will not lift | Pull the midrail down fully to the bottom first and then raise the bottom rail together with midrail up. |
| The shade stack up unevenly | Lower the shade completely, then raise it up to correct it. Repeat if necessary. |